

## LITHIUM-ION BATTERY PACK

# X36

SOLUTIONS FOR  
**CLASS I -Counterbalanced Forklifts**

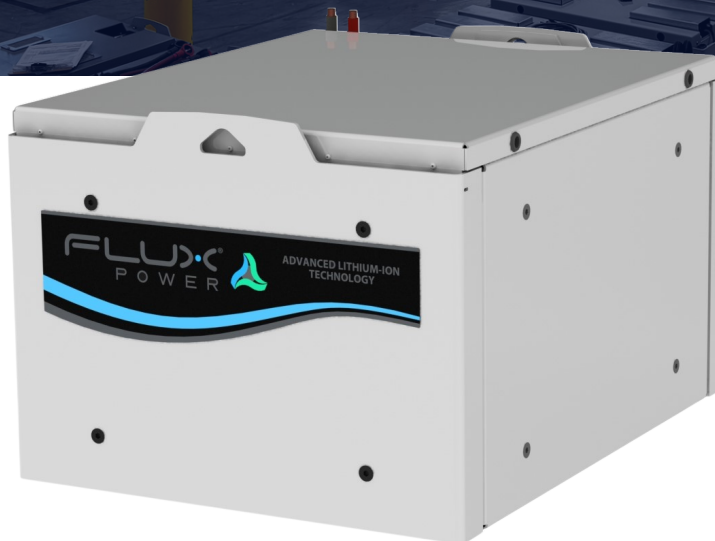
Power Your Transition to Sustainable  
Lithium-ion Battery Technology

### INTELLIGENT

Monitor detailed  
battery performance  
data in real time

### POWERFUL

Sustain energy  
with higher  
capacities



### EFFICIENT

Perform over 3500  
cycles at 80% DoD  
with no maintenance.

### BUILT FOR SAFETY



LiFePO<sub>4</sub>



IP50 RATED

# SPECIFICATIONS | X-SERIES: X36

## FULL INTEGRATION

Flux Power's 36 V lithium-ion batteries are designed to accommodate various Class I material handling equipment through its modular design and its integral battery management system.

The patented BMS software ensures the battery provides peak performance at all times no matter how demanding the operation. Experience the next stage of power and efficiency with a fast ROI and a long battery lifespan.

## TECHNICAL SPECIFICATIONS

- **AVAILABLE CAPACITIES:**  
630 Ah (24.2kWh) | 840 AH (32.3 kWh)
- **SYSTEM (NOMINAL VOLTAGE):**  
36 V (38.4 V)
- **MAX CONTINUOUS CHARGE CURRENT (EXTERNAL):**  
300 A
- **OPERATING TEMPERATURE RANGE:**  
-22 °F to 113 °F (-30 °C to 45 °C)

\* Size of battery depends on equipment with truck adapters available to meet OEM weight requirements. Make sure to ask your sales rep for more information.

## PACK OPTIONS



### SKYBMS TELEMATICS

Access detailed battery performance, monitor fleet activity, and view metrics instantly.



### WEIGHT ADAPTERS

Truck adapters available to meet OEM weight requirements.



### INTEGRATED HEATERS

Combat colder conditions with our state-of-the-art integrated heaters to keep peak performance.



[fluxpower.com](https://fluxpower.com)



877-505-3589

**FLUX** POWER



## LITHIUM-ION BATTERY PACK

# X48

SOLUTIONS FOR  
**CLASS I -Counterbalanced Forklifts**

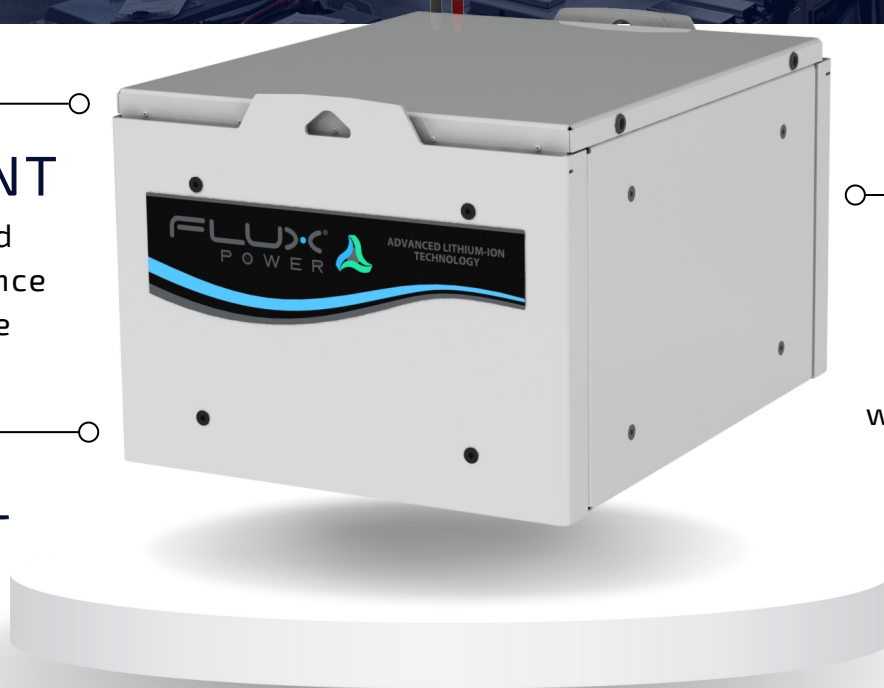
Power Your Transition to Sustainable  
Lithium-ion Battery Technology

### INTELLIGENT

Monitor detailed  
battery performance  
data in real time

### POWERFUL

Sustain energy  
with higher  
capacities



### EFFICIENT

Perform over 3500  
cycles at 80% DoD  
with no maintenance.

### BUILT FOR SAFETY



LiFePO<sub>4</sub>



UL LISTED 2580



IP50 RATED

# SPECIFICATIONS | X-SERIES: X48

## FULL INTEGRATION

Flux Power's 48 V lithium-ion batteries are designed to accommodate various Class I material handling equipment through its modular design and its integral battery management system.

The patented BMS software ensures the battery provides peak performance at all times no matter how demanding the operation. Experience the next stage of power and efficiency with a fast ROI and a long battery lifespan.

## TECHNICAL SPECIFICATIONS

- **AVAILABLE CAPACITIES:**  
630 Ah (32.3 kWh)
- **SYSTEM (NOMINAL VOLTAGE):**  
48 V (51.2 V)
- **MAX CONTINUOUS CHARGE CURRENT (EXTERNAL):**  
300 A
- **OPERATING TEMPERATURE RANGE:**  
-22 °F to 113 °F (-30 °C to 45 °C)

\* Size of battery depends on equipment with truck adapters available to meet OEM weight requirements. Make sure to ask your sales rep for more information.

## PACK OPTIONS



### SKYBMS TELEMATICS

Access detailed battery performance, monitor fleet activity, and view metrics instantly.



### WEIGHT ADAPTERS

Truck adapters available to meet OEM weight requirements.



### PRECISION COOLING

Confidently push your fleet to the limit while ensuring optimal temperature regulation.



[fluxpower.com](https://fluxpower.com)



877-505-3589

**FLUX** POWER



## LITHIUM-ION BATTERY PACK

# X80

SOLUTIONS FOR  
**CLASS I -Counterbalanced Forklifts**

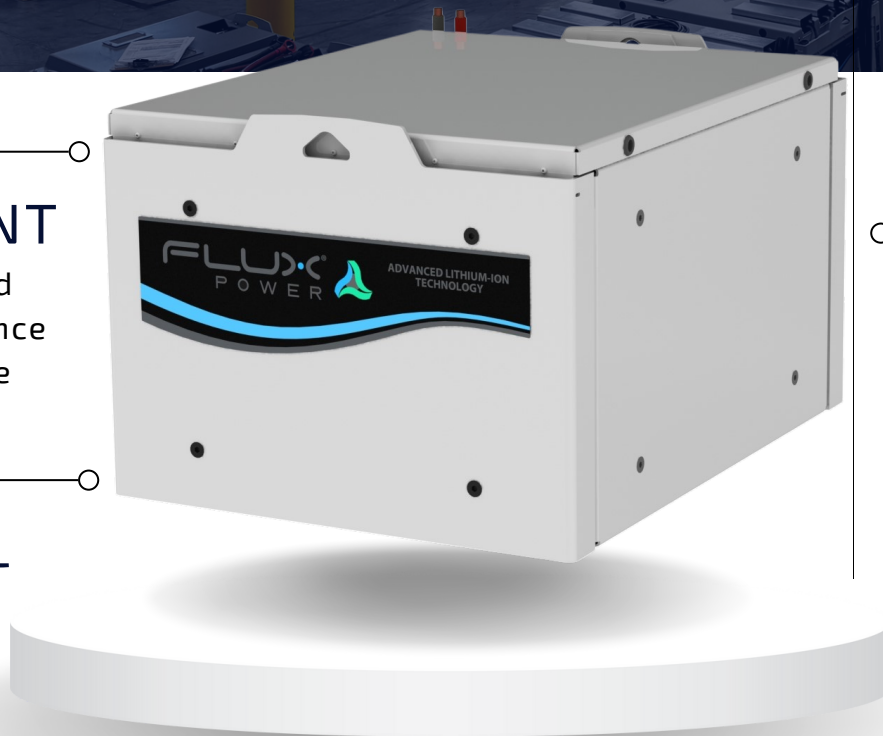
Power Your Transition to Sustainable  
Lithium-ion Battery Technology

### INTELLIGENT

Monitor detailed  
battery performance  
data in real time

### POWERFUL

Sustain energy  
with higher  
capacities



### EFFICIENT

Perform over 3500  
cycles at 80% DoD  
with no maintenance.

### BUILT FOR SAFETY



LiFePO<sub>4</sub>



IP50 RATED

# SPECIFICATIONS | X-SERIES: X80

## FULL INTEGRATION

Flux Power's 80 V lithium-ion batteries are designed to accommodate various Class I material handling equipment through its modular design and its integral battery management system.

The patented BMS software ensures the battery provides peak performance at all times no matter how demanding the operation. Experience the next stage of power and efficiency with a fast ROI and a long battery lifespan.

## TECHNICAL SPECIFICATIONS

- **AVAILABLE CAPACITIES:**  
420 Ah (32.3 kWh)
- **SYSTEM (NOMINAL VOLTAGE):**  
80 V (76.8 V)
- **MAX CONTINUOUS CHARGE CURRENT (EXTERNAL):**  
350 A
- **OPERATING TEMPERATURE RANGE:**  
-22 °F to 113 °F (-30 °C to 45 °C)

\* Size of battery depends on equipment with truck adapters available to meet OEM weight requirements. Make sure to ask your sales rep for more information.

## PACK OPTIONS



### SKYBMS TELEMATICS

Access detailed battery performance, monitor fleet activity, and view metrics instantly.



### WEIGHT ADAPTERS

Truck adapters available to meet OEM weight requirements.



### INTEGRATED HEATERS

Combat colder conditions with our state-of-the-art integrated heaters to keep peak performance.



[fluxpower.com](https://fluxpower.com)



877-505-3589

**FLUX** POWER