

LITHIUM-ION BATTERY PACK

X36

SOLUTIONS FOR
CLASS I Counterbalanced Forklifts

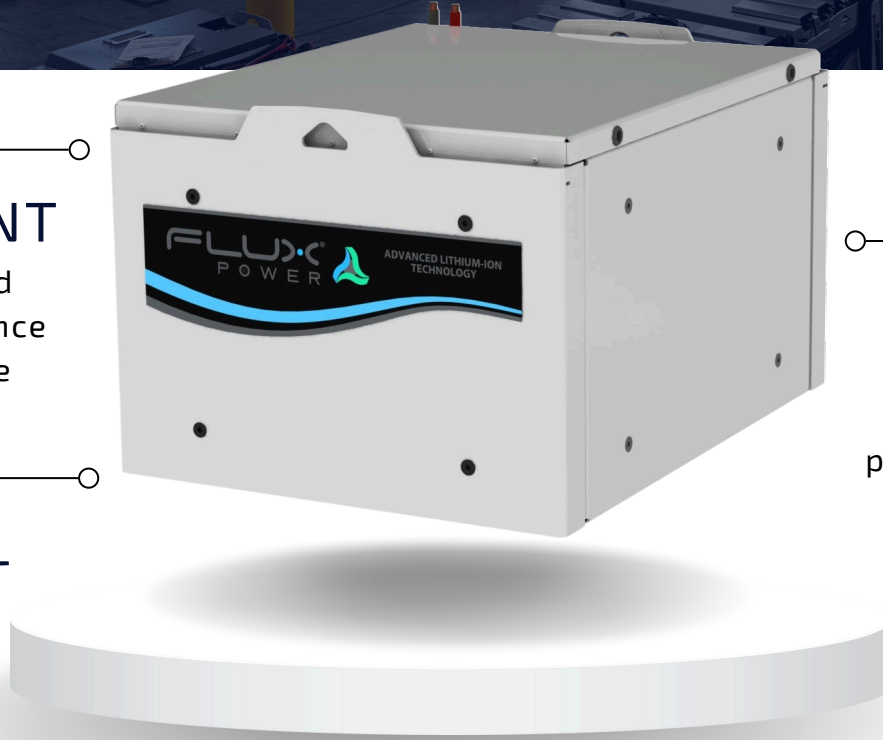
Power Your Transition to Sustainable
Lithium-ion Battery Technology

INTELLIGENT

Monitor detailed
battery performance
data in real time

POWERFUL

Sustain energy
with higher
capacities



EFFICIENT

Perform over 3,000
cycles with no
performance drop off

BUILT FOR SAFETY



LiFePO₄



IP50 RATED

SPECIFICATIONS | X-SERIES: X36

FULL INTEGRATION

Flux Power's 36 V lithium-ion batteries are designed to accommodate various Class I material handling equipment through its modular design and its integral battery management system.

The patented BMS software ensures the battery provides peak performance at all times no matter how demanding the operation. Experience the next stage of power and efficiency with a fast ROI and a long battery lifespan.

TECHNICAL SPECIFICATIONS

- **AVAILABLE CAPACITIES:**
630 Ah (24.2kWh) | 840 AH (32.3 kWh)
- **SYSTEM (NOMINAL VOLTAGE):**
36 V (38.4 V)
- **MAX CONTINUOUS CHARGE CURRENT (EXTERNAL):**
300 A
- **OPERATING TEMPERATURE RANGE:**
-22 °F to 131 °F (-30 °C to 55 °C)

* Size of battery depends on equipment with truck adapters available to meet OEM weight requirements. Make sure to ask your sales rep for more information.

PACK OPTIONS



SKYBMS TELEMATICS

Access detailed battery performance, monitor fleet activity, and view metrics instantly.



WEIGHT ADAPTERS

Truck adapters available to meet OEM weight requirements.



INTEGRATED HEATERS

Combat colder conditions with our state-of-the-art integrated heaters to keep peak performance.



fluxpower.com



877-505-3589

FLUX POWER

LITHIUM-ION BATTERY PACK

X48

SOLUTIONS FOR
CLASS I Counterbalanced Forklifts

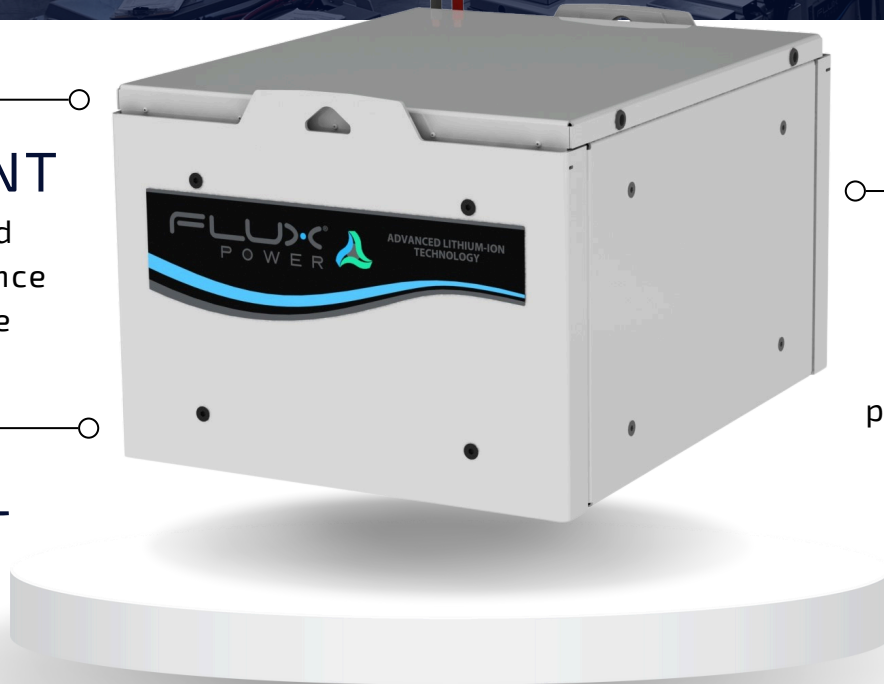
Power Your Transition to Sustainable
Lithium-ion Battery Technology

INTELLIGENT

Monitor detailed
battery performance
data in real time

POWERFUL

Sustain energy
with higher
capacities



EFFICIENT

Perform over 3,000
cycles with no
performance drop off

BUILT FOR SAFETY



LiFePO₄



UL LISTED 2580



IP50 RATED

SPECIFICATIONS | X-SERIES: X48

FULL INTEGRATION

Flux Power's 48 V lithium-ion batteries are designed to accommodate various Class I material handling equipment through its modular design and its integral battery management system.

The patented BMS software ensures the battery provides peak performance at all times no matter how demanding the operation. Experience the next stage of power and efficiency with a fast ROI and a long battery lifespan.

TECHNICAL SPECIFICATIONS

- **AVAILABLE CAPACITIES:**
630 Ah (32.3 kWh)
- **SYSTEM (NOMINAL VOLTAGE):**
48 V (51.2 V)
- **MAX CONTINUOUS CHARGE CURRENT (EXTERNAL):**
300 A
- **OPERATING TEMPERATURE RANGE:**
-22 °F to 131 °F (-30 °C to 55 °C)

* Size of battery depends on equipment with truck adapters available to meet OEM weight requirements. Make sure to ask your sales rep for more information.

PACK OPTIONS



SKYBMS TELEMATICS

Access detailed battery performance, monitor fleet activity, and view metrics instantly.



WEIGHT ADAPTERS

Truck adapters available to meet OEM weight requirements.



PRECISION COOLING

Confidently push your fleet to the limit while ensuring optimal temperature regulation.



fluxpower.com



877-505-3589

FLUX POWER

LITHIUM-ION BATTERY PACK

X80

SOLUTIONS FOR
Class I Counterbalanced Forklifts

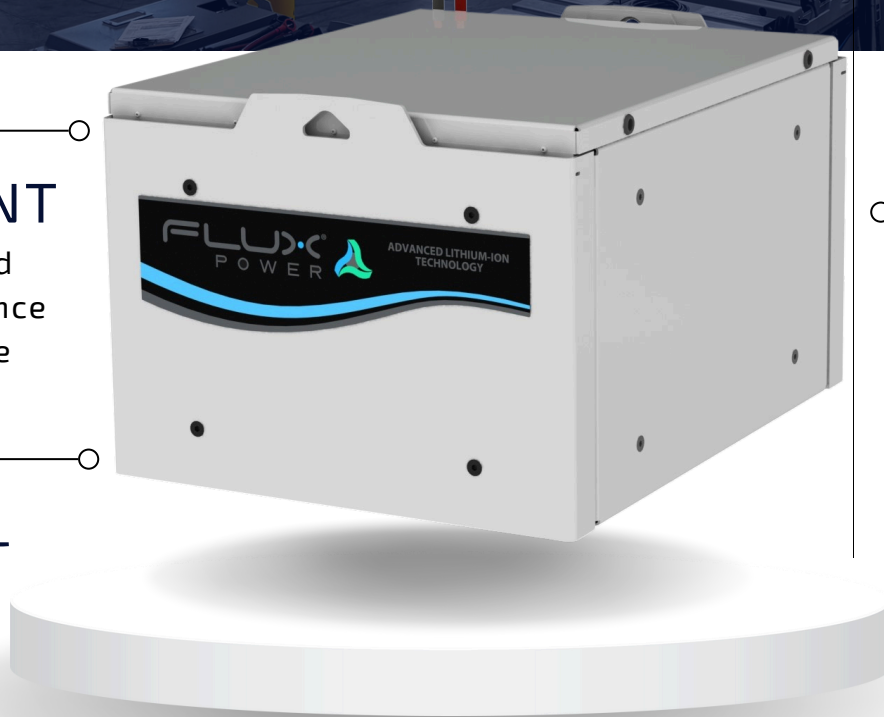
Power Your Transition to Sustainable
Lithium-ion Battery Technology

INTELLIGENT

Monitor detailed
battery performance
data in real time

POWERFUL

Sustain energy
with higher
capacities



EFFICIENT

Perform over 3,000
cycles with no
performance drop off

BUILT FOR SAFETY



LiFePO₄



IP50 RATED

SPECIFICATIONS | X-SERIES: X80

FULL INTEGRATION

Flux Power's 80 V lithium-ion batteries are designed to accommodate various Class I material handling equipment through its modular design and its integral battery management system.

The patented BMS software ensures the battery provides peak performance at all times no matter how demanding the operation. Experience the next stage of power and efficiency with a fast ROI and a long battery lifespan.

TECHNICAL SPECIFICATIONS

- **AVAILABLE CAPACITIES:**
420 Ah (32.3 kWh)
- **SYSTEM (NOMINAL VOLTAGE):**
80 V (76.8 V)
- **MAX CONTINUOUS CHARGE CURRENT (EXTERNAL):**
350 A
- **OPERATING TEMPERATURE RANGE:**
-22 °F to 131 °F (-30 °C to 55 °C)

* Size of battery depends on equipment with truck adapters available to meet OEM weight requirements. Make sure to ask your sales rep for more information.

PACK OPTIONS



SKYBMS TELEMATICS

Access detailed battery performance, monitor fleet activity, and view metrics instantly.



WEIGHT ADAPTERS

Truck adapters available to meet OEM weight requirements.



INTEGRATED HEATERS

Combat colder conditions with our state-of-the-art integrated heaters to keep peak performance.



fluxpower.com



877-505-3589

FLUX POWER