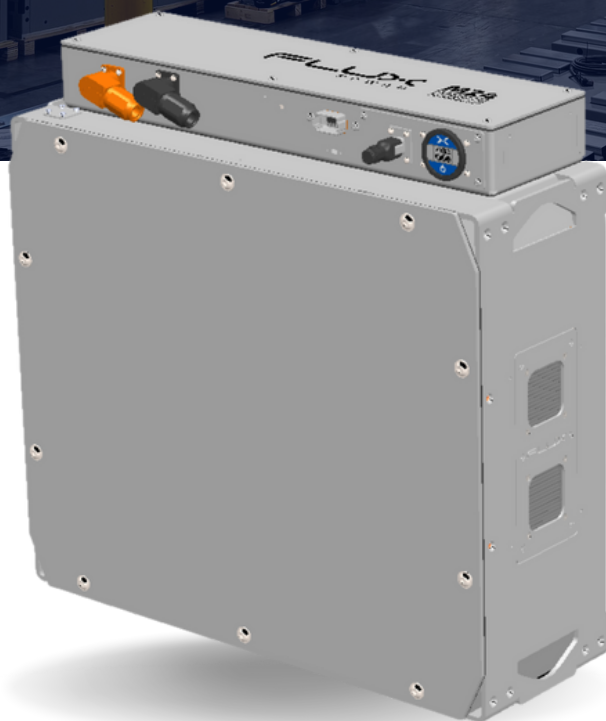


LITHIUM-ION BATTERY PACK

M24-G2

SOLUTIONS FOR
CLASS III END RIDERS & CENTER RIDERS

Power Your Transition to Sustainable
Lithium-ion Battery Technology



INTELLIGENT

Monitor detailed
battery performance
data in real time

POWERFUL

Sustain energy
with higher
capacities

EFFICIENT

Perform over 3500
cycles at 80% DoD
with no maintenance.

BUILT FOR SAFETY



LiFePO₄



UL LISTED 2580



IP52 RATED

SPECIFICATIONS | G2-SERIES: M24

FULL INTEGRATION

Flux Power's 24 V lithium-ion batteries are designed to accommodate various Class III material handling equipment through its modular design and its integral battery management system.

The patented BMS software ensures the battery provides peak performance at all times no matter how demanding the operation. Experience the next stage of power and efficiency with a fast ROI and a long battery lifespan.

TECHNICAL SPECIFICATIONS

- **AVAILABLE CAPACITIES:**
840 Ah (20.16 kWh)
- **SYSTEM (NOMINAL VOLTAGE):**
24 V (25.6 V)
- **MAX CONTINUOUS CHARGE CURRENT (EXTERNAL):**
300 A
- **OPERATING TEMPERATURE RANGE:**
-22 °F to 113 °F (-30 °C to 45 °C)

* Size of battery depends on equipment with truck adapters available to meet OEM weight requirements. Make sure to ask your sales rep for more information.

FEATURES



INTEGRATED HEATERS

Combat colder conditions with our state-of-the-art integrated heaters to keep peak performance.



PRECISION COOLING

Confidently push your fleet to the limit while ensuring optimal temperature regulation.

OPTIONS



SKYBMS TELEMATICS

Access detailed battery performance, monitor fleet activity, and view metrics instantly.



fluxpower.com



877-505-3589

FLUX
POWER