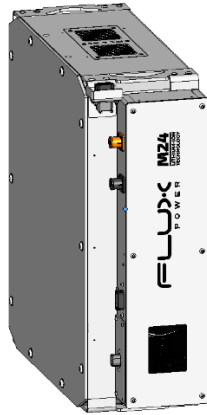


Flux Power M24-G2 Installation Guide

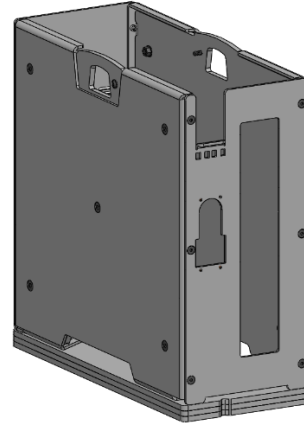


Installation

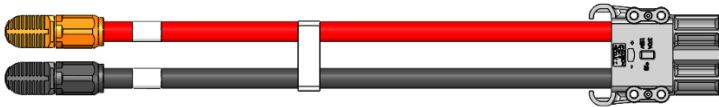
1 Deliverables



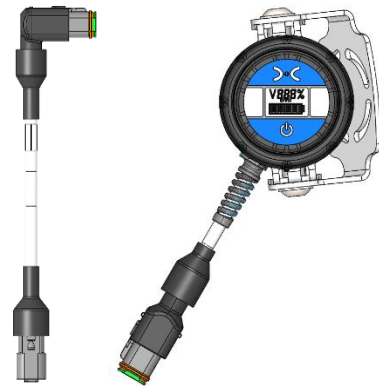
Battery
QTY: 1



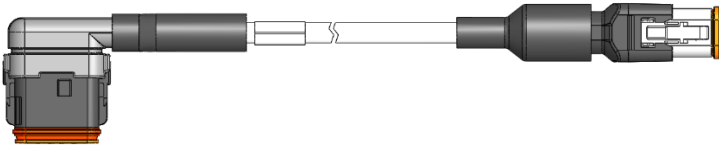
Weight Adapter
Qty: 1



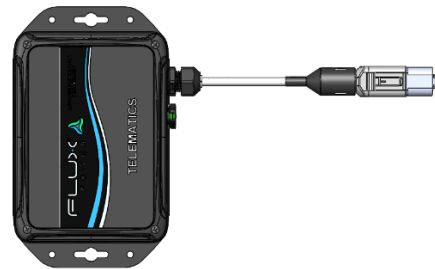
Power Cables (varying connector and length)
QTY: 1



External BDI with Harness (if applicable)
QTY: 1



External Harness (varying connections and length)
QTY: 1



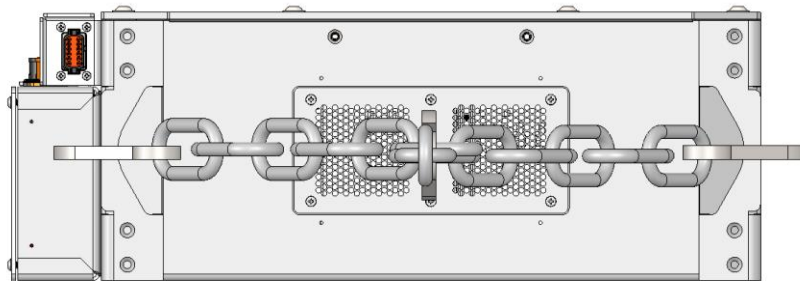
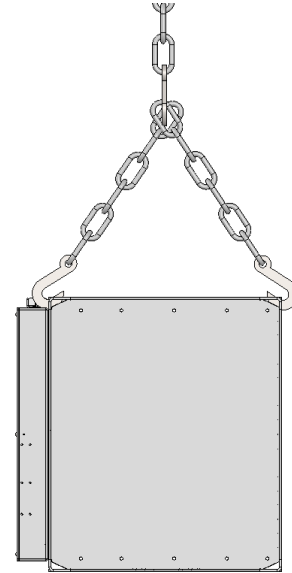
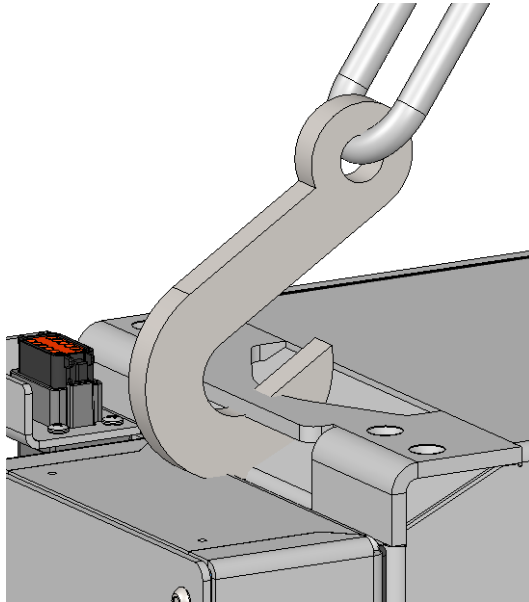
Telematics Box (if applicable)
QTY: 1

2 Battery Installation

2.1 Installing Battery into Weight Adapter

2.1.1 Lifting Points

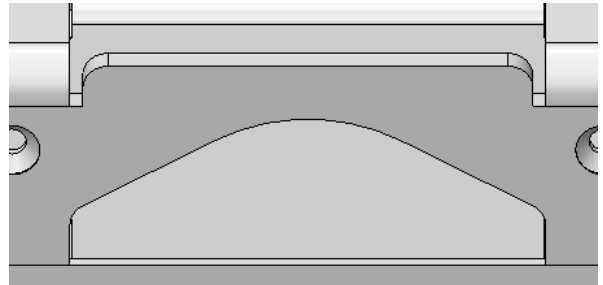
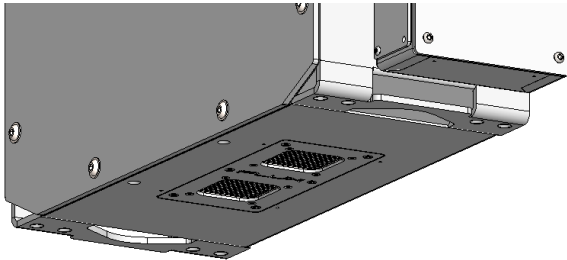
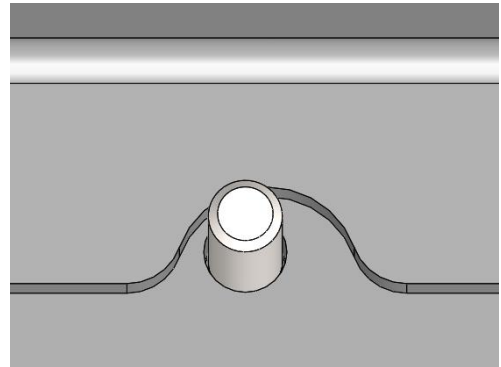
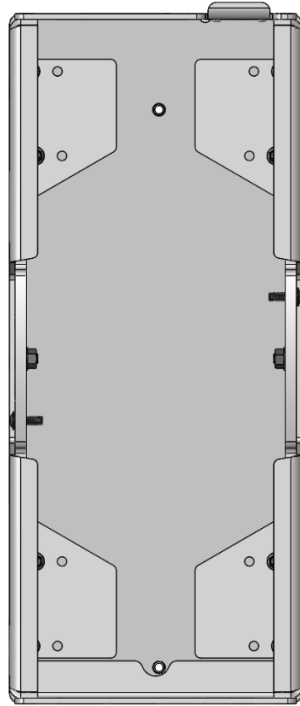
Use the two lifting points of the battery to lift the battery up. A set of hooks with proper chains or lifting straps is recommended.



Installation

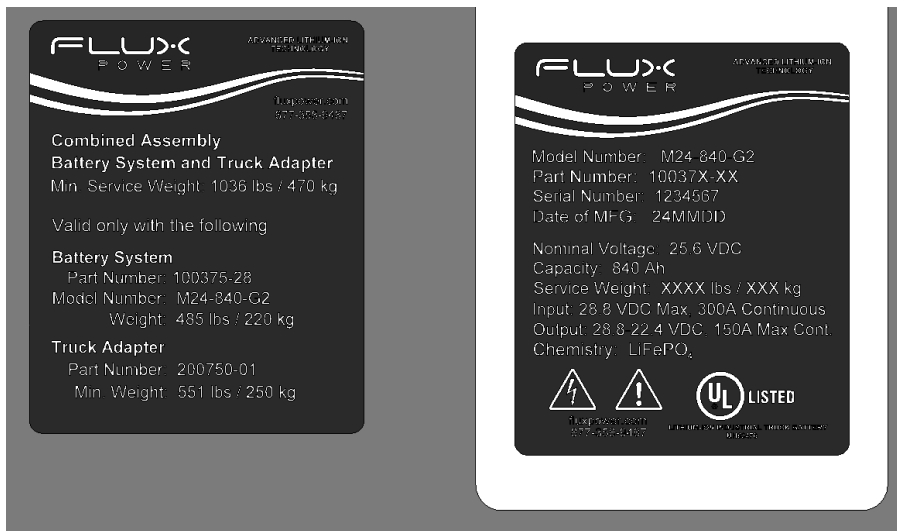
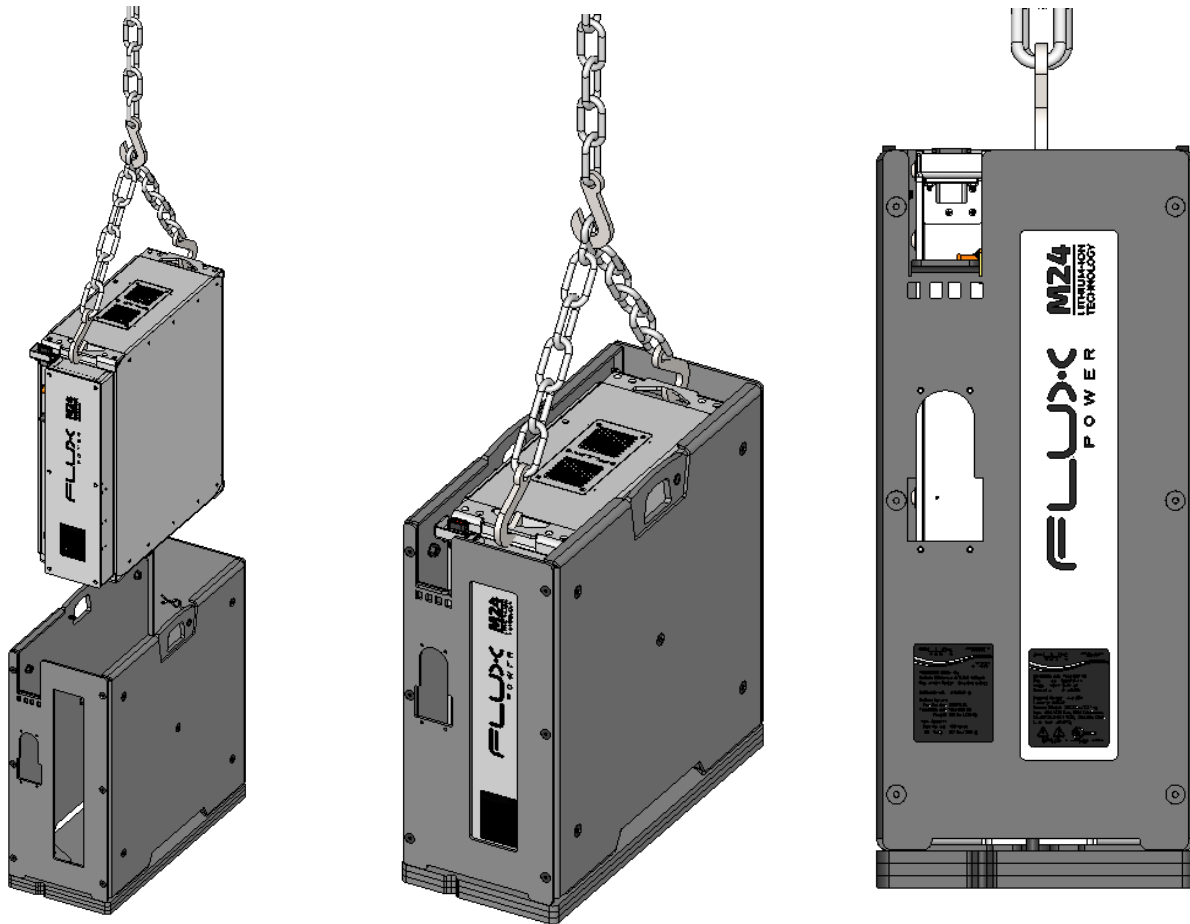
2.1.2 Orientation

There are two studs on the bottom of the weight adapter's interior that are meant to align with gaps in the bottom face of the battery.



Installation

The battery should be oriented such that the battery I.D. plate faces the same direction as the combined assembly I.D. plate on the weight adapter.



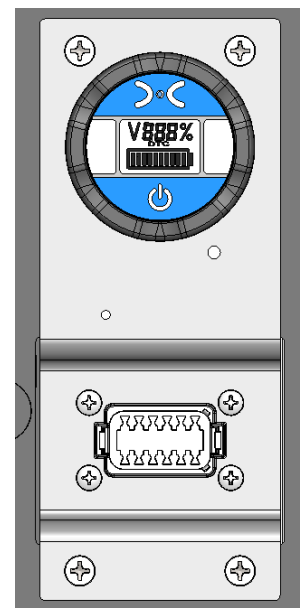
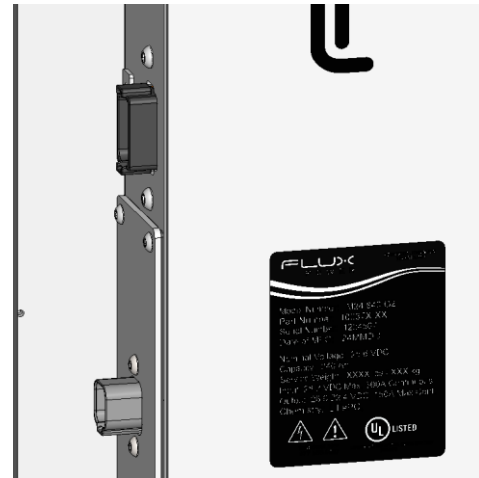
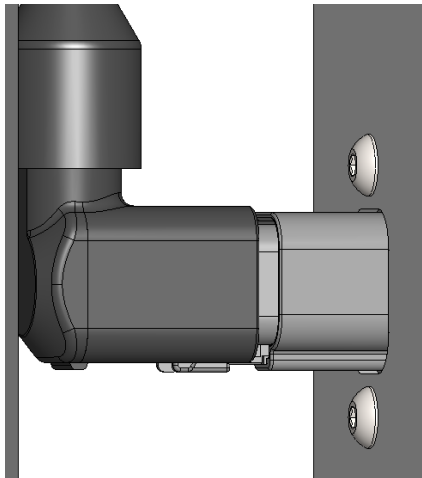
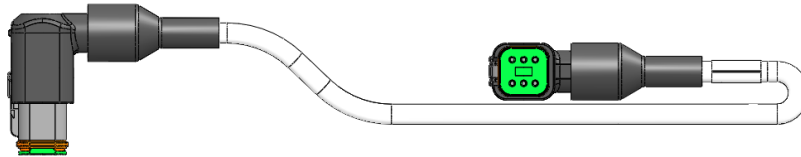
Installation

2.2 Remote Accessories Installation

The battery may have a few remote items that are installed/mounted onto the weight adapter and connect to the battery's electronics tray.

2.2.1 BDI

The remote BDI will mount onto the front of the weight adapter and connects to the battery with a 6-pin extension harness at a 6-pin receptacle. The 6-pin receptacle sits behind the front cover of the weight adapter. The front cover can be removed or can remain to connect the extension harness.



Installation

2.2.2 Communications Port

The remote communications port will mount onto the front of the weight adapter and connects to the battery with a 12-pin extension harness at a 12-pin receptacle. The 12-pin receptacle sits behind the front cover of the weight adapter. It will also mount to the top of the weight adapter. The front cover can be removed or can remain to connect the extension harness.

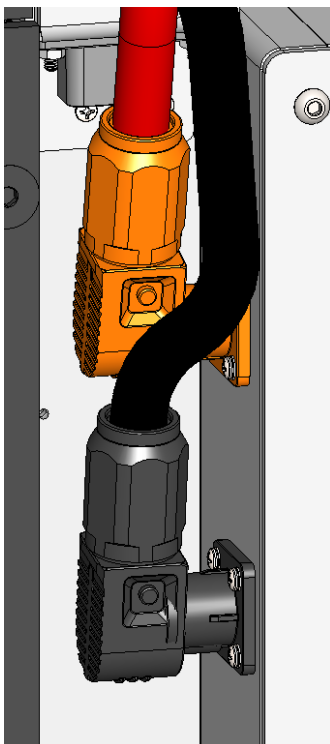
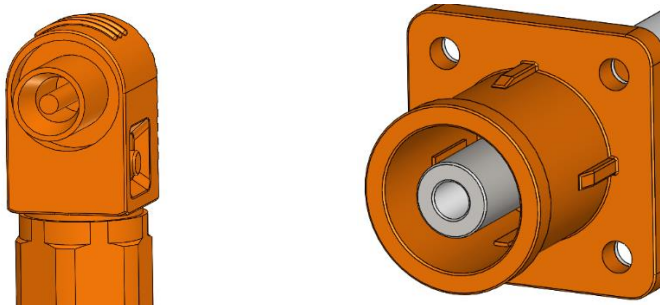
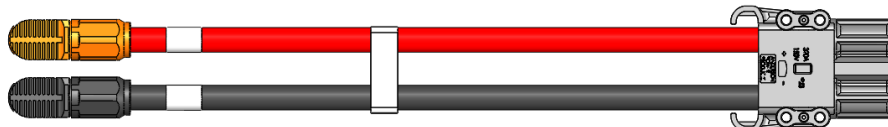


2.2.3 Communication Port

2.3 Installing Power Cables

2.3.1 Discharge and Charge Power Cables

The discharge and charge power cables have a connector complimentary to the connector on the truck. Power connections can only be inserted into receptacles of the same color and key. An orange insert will slide into an orange receptacle and a black insert into a black receptacle. Align the keys of the insert to that of the receptacle to properly insert the connection. A connector can also be removed by pressing on the button to the side of the plug and pulling the connector straight out.

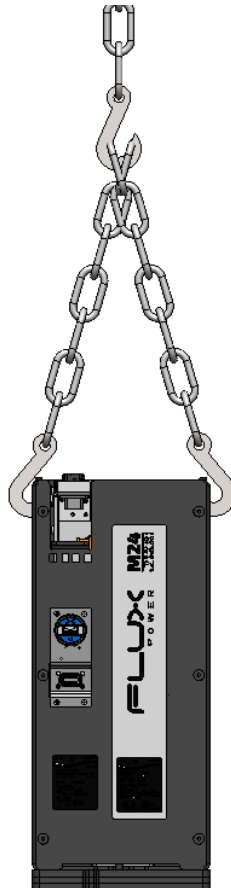
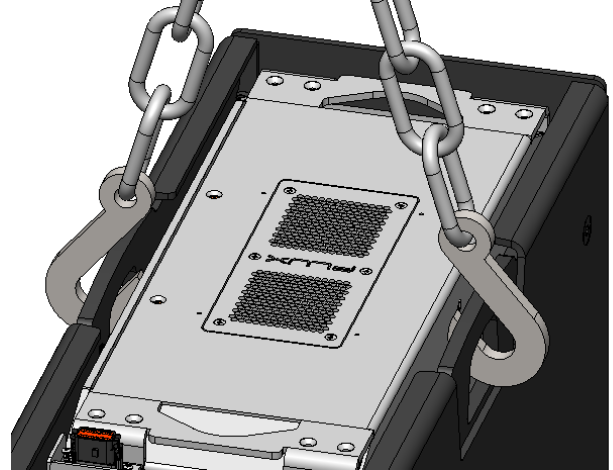


Installation

2.4 Installing Battery and Weight Adapter into Truck

2.4.1 Lifting Points

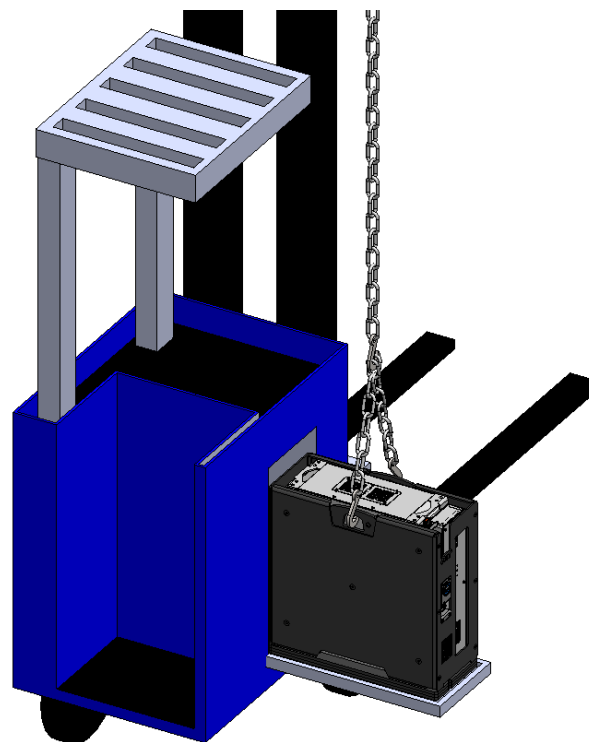
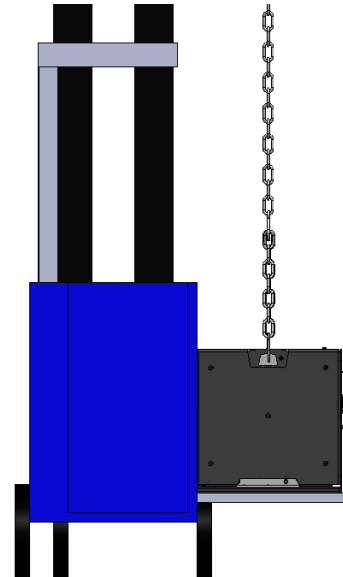
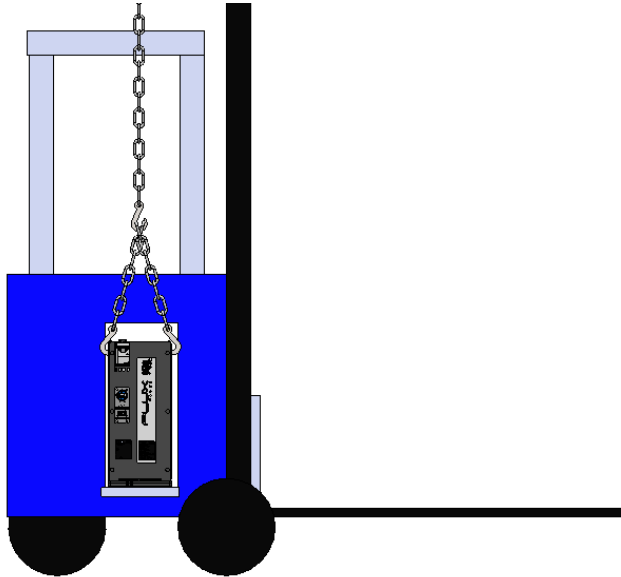
Different weight adapters will have different lifting points. Depending on the truck's battery compartment, the battery's orientation may differ. Use the two lifting points on the front or the side of the weight adapter to lift the unit. Different weight adapters will have lifting points on different opposite sides. A set of hooks with proper chains or lifting straps is recommended.



Installation

2.4.2 Slide-in

Sliding the battery into the compartment requires that both the battery and weight adapter be suspended in the air and then pushed into the compartment. The truck's battery compartment may have a sliding tray for the battery to slide in and out of the compartment. This may require one truck to suspend the loaded sliding tray in the air, and a second truck to push the loaded sliding tray back into the compartment. Pull the sliding tray out to place the unit on and then push the tray back into the compartment. Remove the lifting equipment prior to sliding the battery into the compartment.

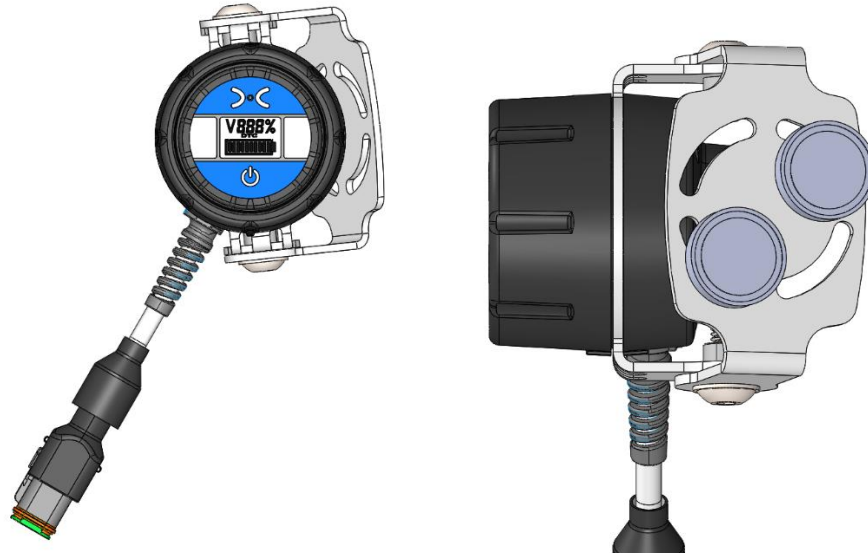


3 External Accessories Installation

3.1 External BDI (if applicable)

3.1.1 Mounting Points

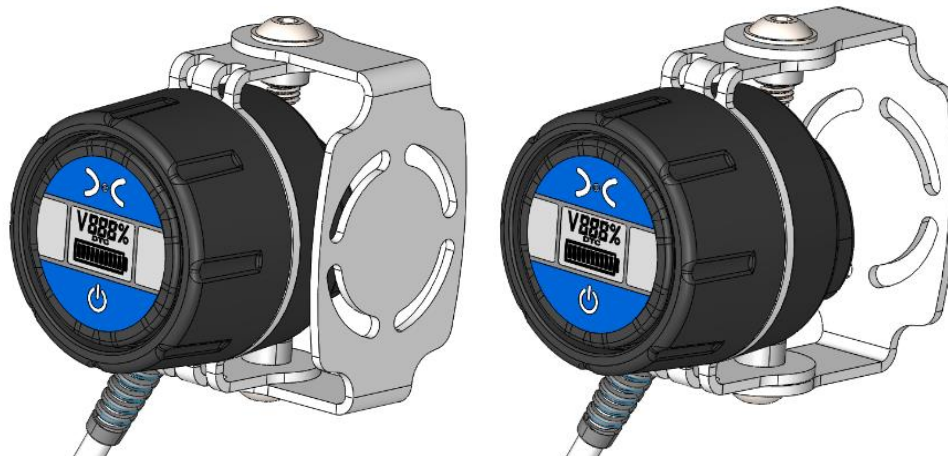
Use the magnets at the bottom of the mounting plate to mount to external BDI to the truck frame. Some mounting plates may have one or two magnets.



3.1.2 Mounting Location

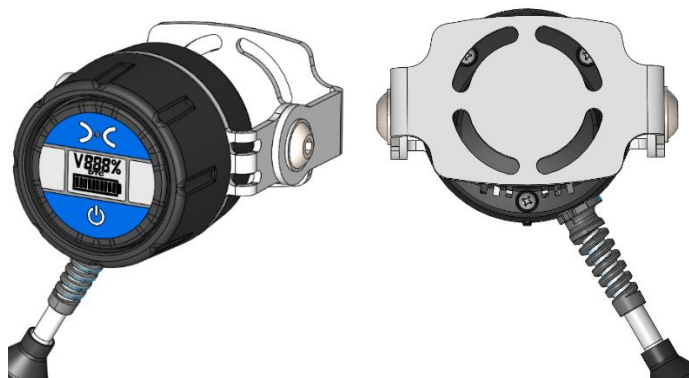
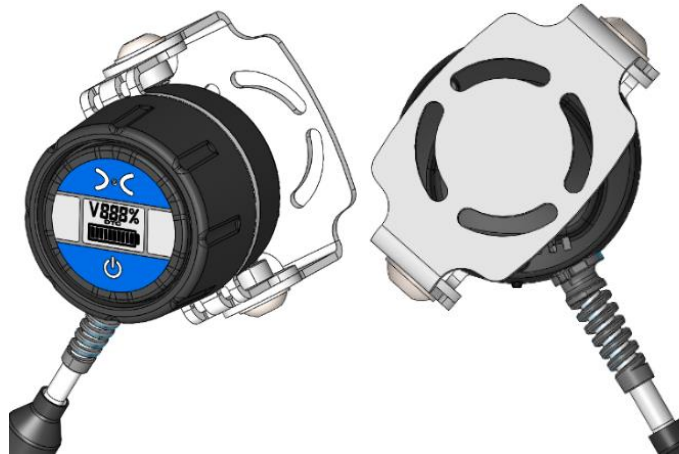
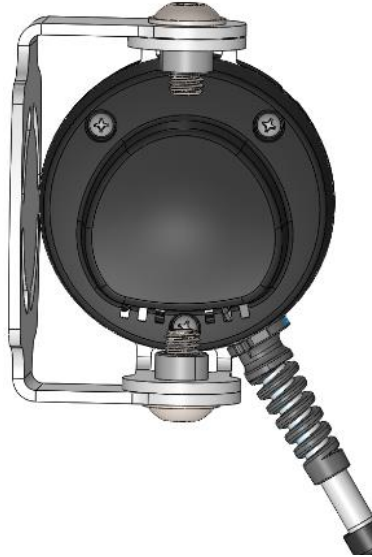
Mount external BDI so that it faces the operator with the Flux Power logo on top and the power button on the bottom.

The two button head screws on the sides of the mounting plate can be loosened to change the angle of the external BDI. Tighten the screws once the preferred orientation is reached.



The three screws on the back of the BDI's housing can be removed to change the location of the secondary mounting plate of the external BDI.

Installation



3.2 Telematics

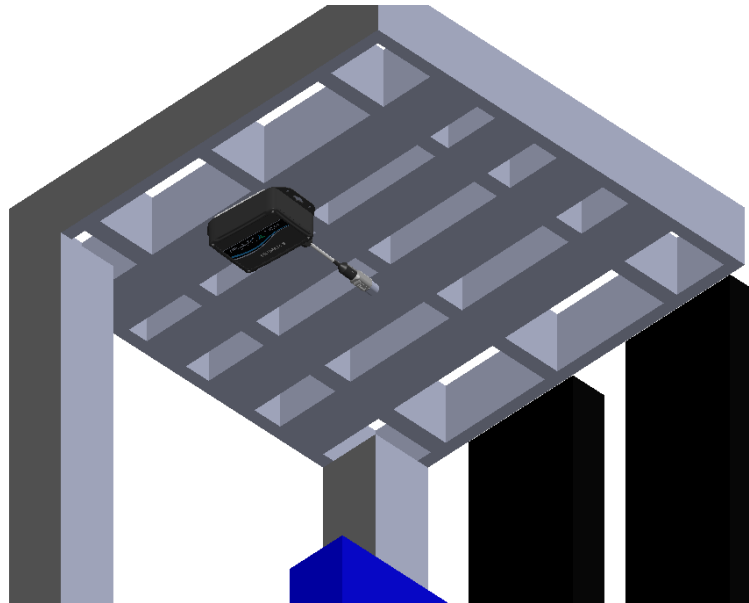
3.2.1 Mounting Points

Use the 4 holes on the side to mount the telematics box onto the truck by tapping into the truck frame; or use the 2 slots on the side to zip-tie the telematics box onto the truck frame.



3.2.2 Mounting Location

Mount the telematics box underneath the overhead guard. If no overhead guard is present, mount the telematics box on a secured spot where collisions with other objects cannot damage it.



3.3 External Harness

3.3.1 Mounting Points

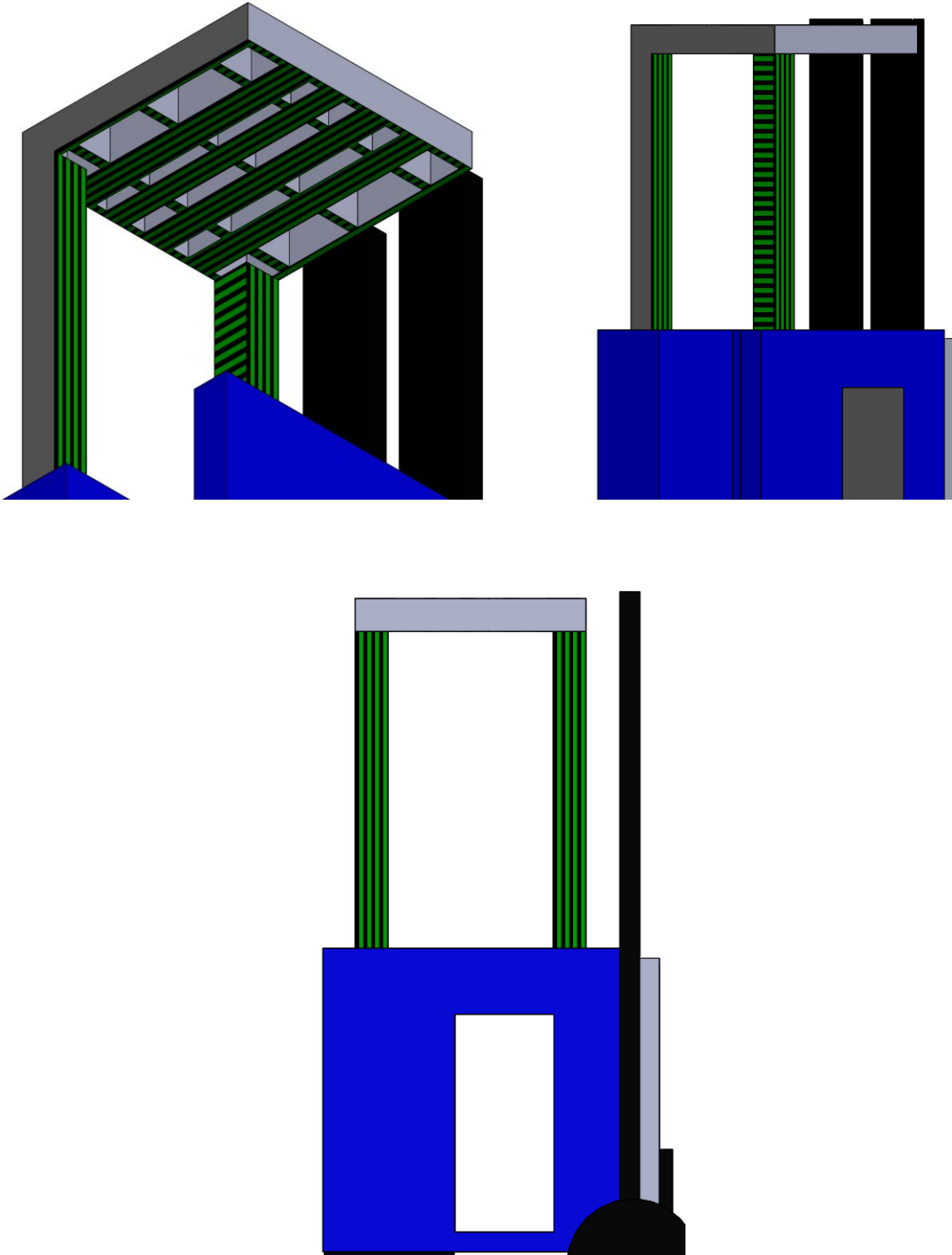
Use zip ties to mount the external harness's body along the truck frame. Different external harnesses have different connectors depending on the truck and the customer's order.

Installation

3.3.2 Mounting Location

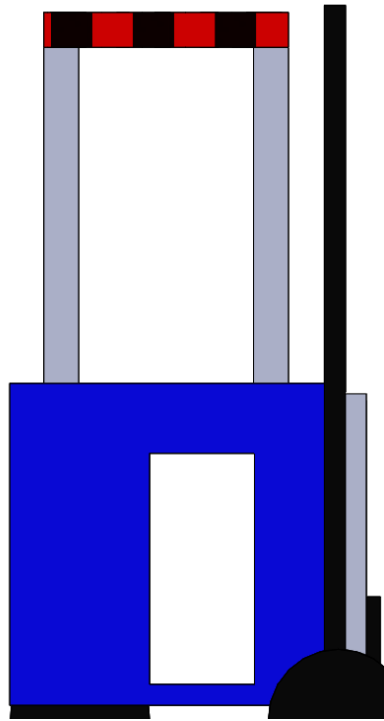
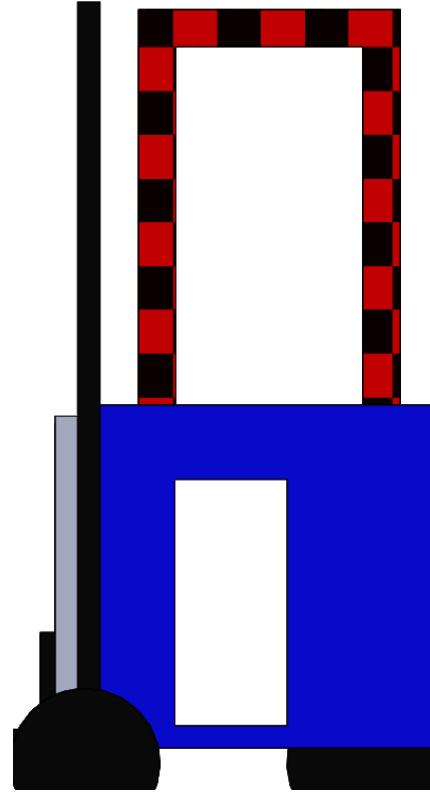
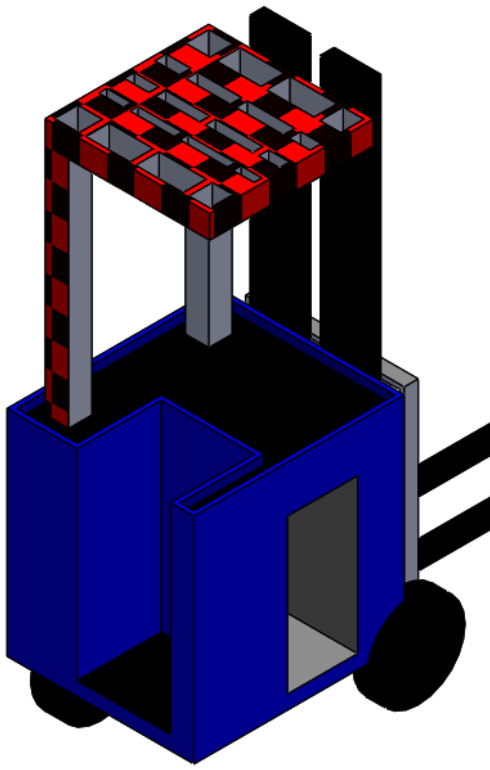
Wrap the external harness within the inside of the truck frame to limit damage to the harness from the truck's surroundings. Recommended locations are highlighted striped green. Areas to avoid are highlighted checkered red.

Recommended locations in striped green:



Installation

Avoid mounting the harness in areas where it can be pinched or scraped. Areas to avoid in checkered red:

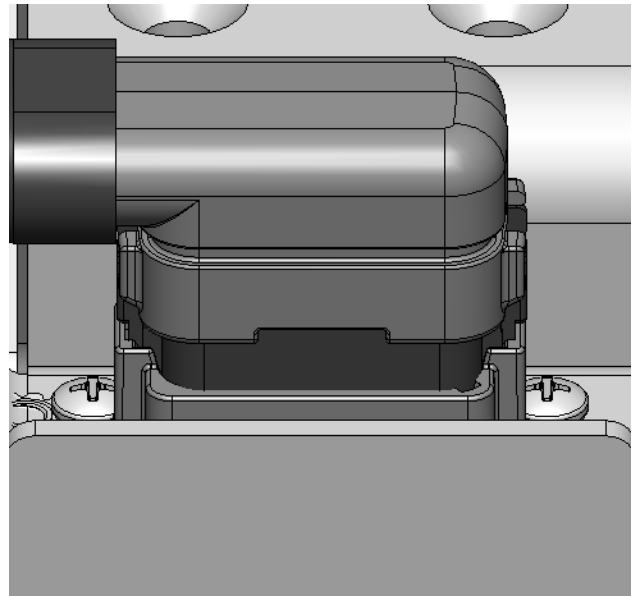
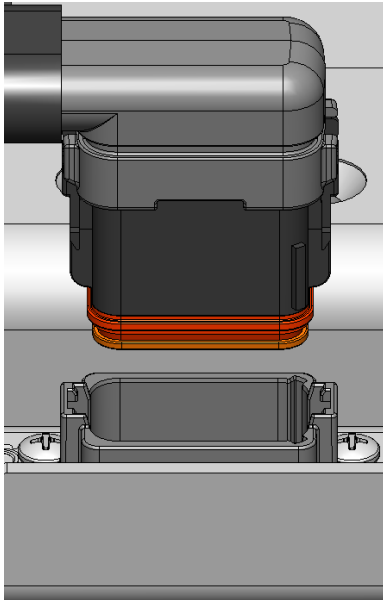


4 Operation

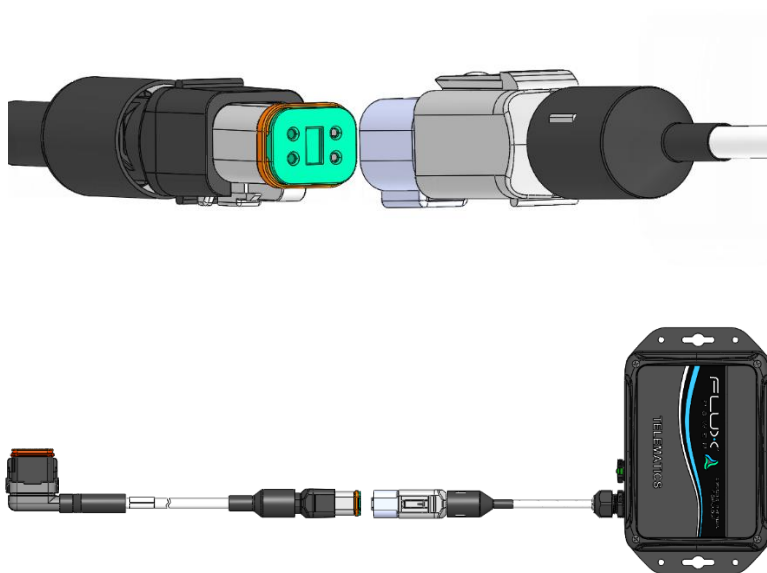
4.1 Discharging the Battery

The battery will need to have an external harness and all connectors properly connected to any external accessories present to discharge. External harness connections will vary between different harnesses and truck configurations. An external harness will either connect to the battery's 12-pin communications port, or to a 6-pin receptacle when an external BDI is present. The battery's power cables will have a complimentary connector to the truck. The power cables are always connected to the truck. Do not charge through the power cables.

An external harness connection to the remote 12-pin communications port's connection on the top of the battery:

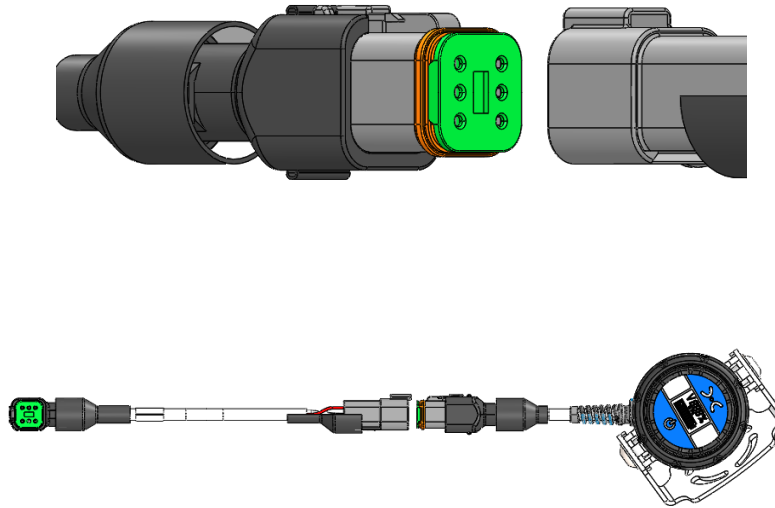


Telematics harness connection is a 4-pin connection:

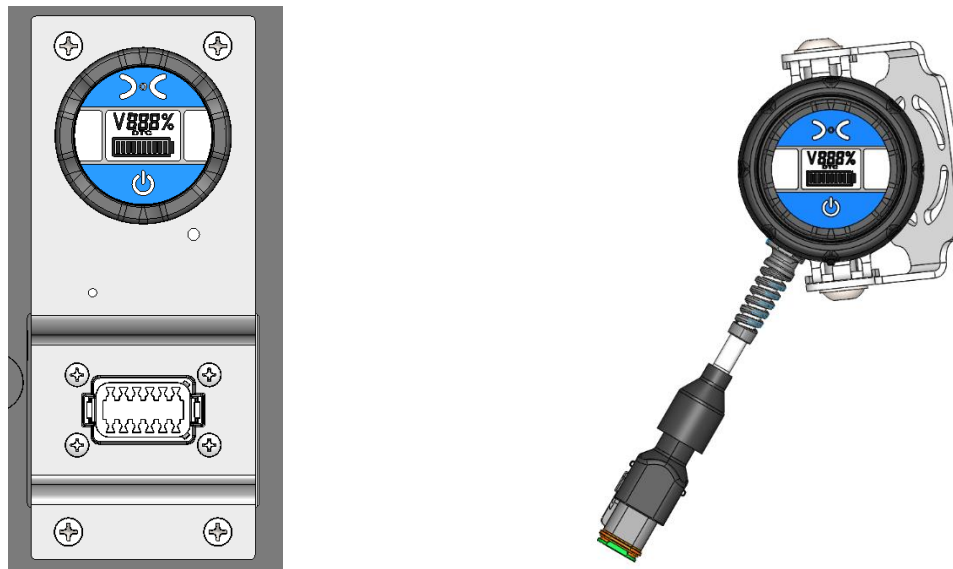


Installation

External BDI connection is a 6-pin connection:

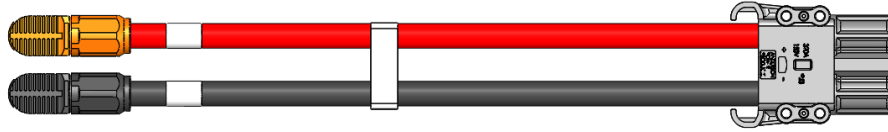


Depending on the battery configuration, it will either have an internal or external BDI. The internal and external BDI function the same way. The battery is turned ON by pressing and holding the power button symbol on the BDI for at least 3 seconds. The battery is turned OFF by pressing and holding the power button symbol for at least 3 seconds.



4.2 Charging the Battery

The battery is charged through the same power cables that it uses to discharge through the truck. The connector on the power cables is complimentary to the connector on the truck and the charger. Disconnect the battery's power cables from the truck and connect them to the charger to charge the battery.



5 Flux Power Contact Details

Flux Power Inc.
Address: 2685 South Melrose Drive,
Vista, CA 92081
Tel: 877-505-3589
Fax: 760-741-3535
Email: Support@fluxpower.com
Web: www.fluxpower.com

WARNING – Risk of Fire – No User Serviceable Parts