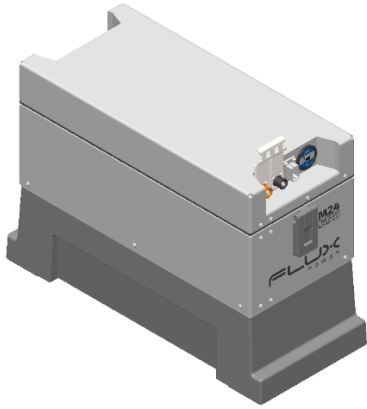


Flux Power M24 G1 Installation Guide

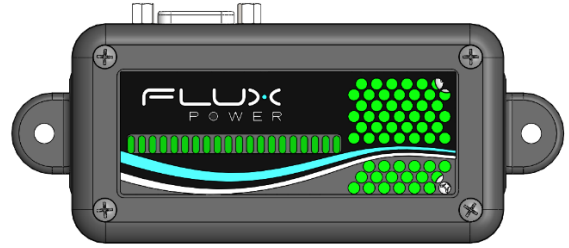


Installation

1 Deliverables



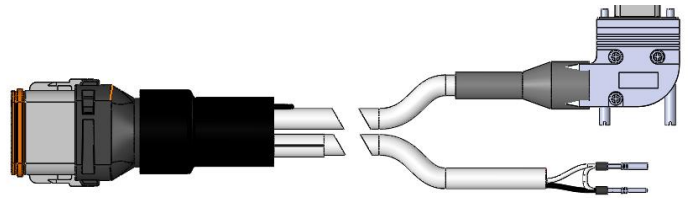
Battery with Weight Adapter
QTY: 1



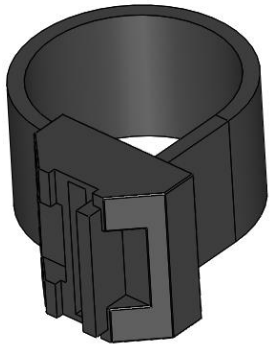
External SOC Gauge
Qty: 1



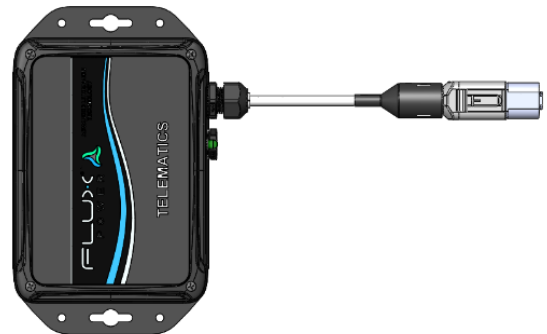
Power Cables (varying connector and length)
QTY: 1



External Harness (varying connection and length)
QTY: 1



Zip Tie
QTY: 2



Telematics Box (if applicable)
QTY: 1

2 Battery Installation

2.1 Lifting Points

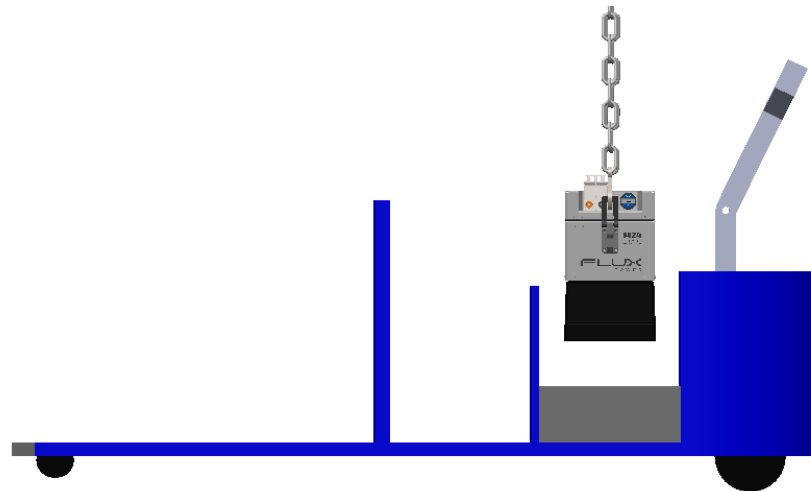
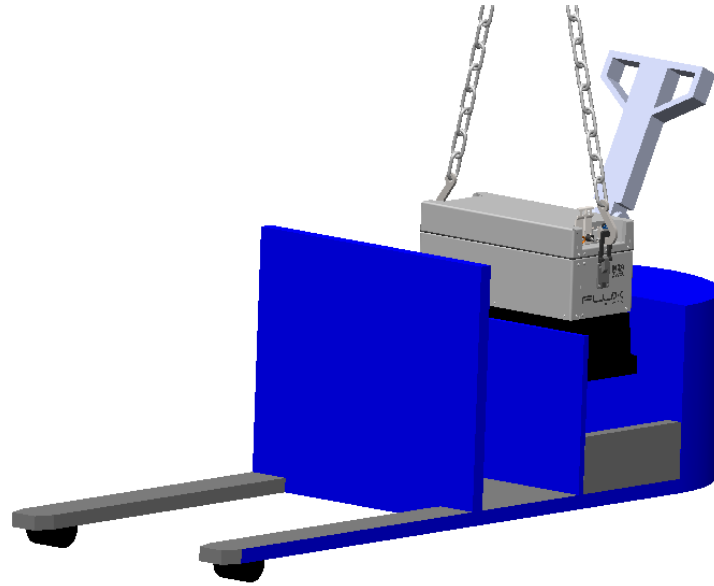
The battery has two lifting rings to be used as lifting points. A set of hooks with proper chains or lifting straps is recommended.



2.2 Installing Battery into Truck

2.2.1 Drop-in

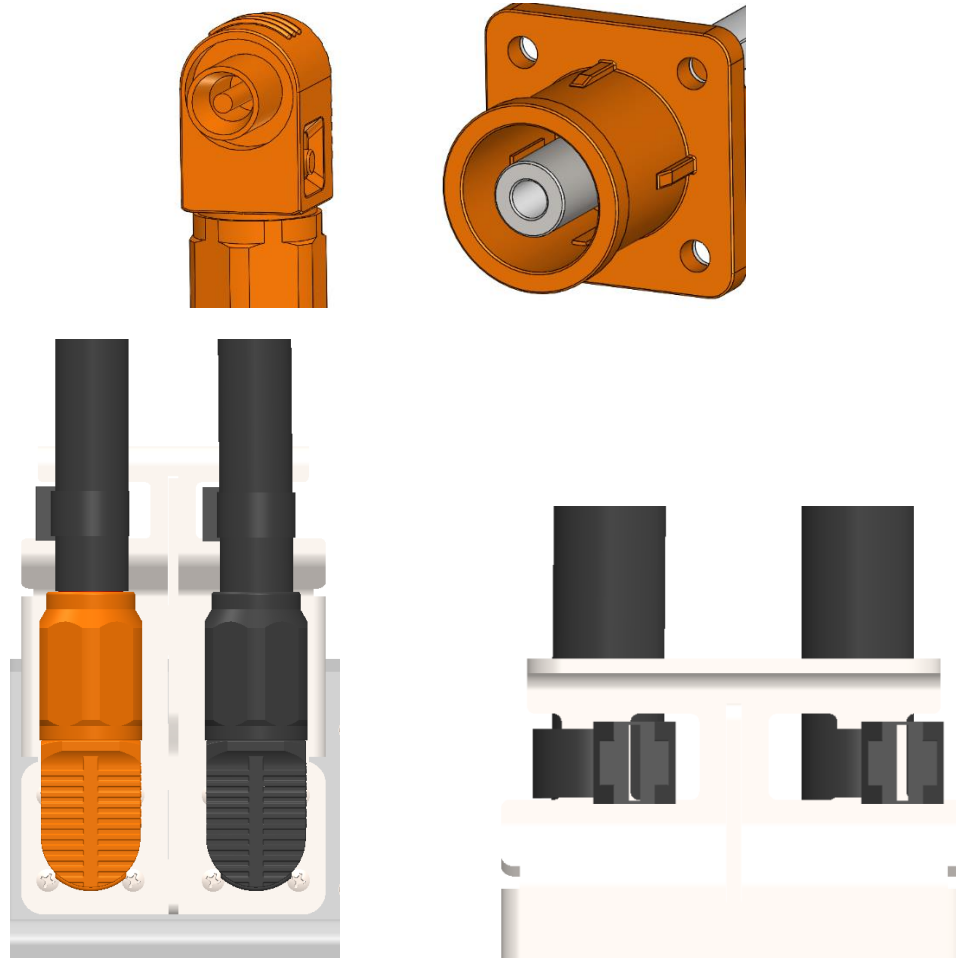
Lift and align the battery into the truck's battery compartment by positioning the battery in the center of the battery compartment.



2.3 Installing Power Cables

2.3.1 Power Connections Between Battery Boxes

Power connections can only be inserted into the same color and key receptacles. An orange insert will slide into an orange receptacle, and a black insert into a black receptacle. Align the keys of the insert to that of the receptacle to properly insert the connection. A connector can also be removed by pressing the button on the side of the plug and pulling the connector straight out.



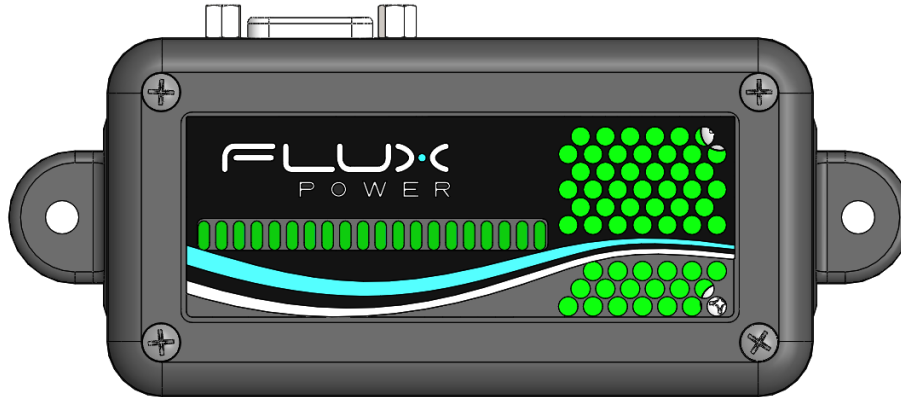
Use the provided zip ties (850330) to secure each power cable through the slots on the bracket.

3 External Accessories Installation

3.1 External SOC Gauge

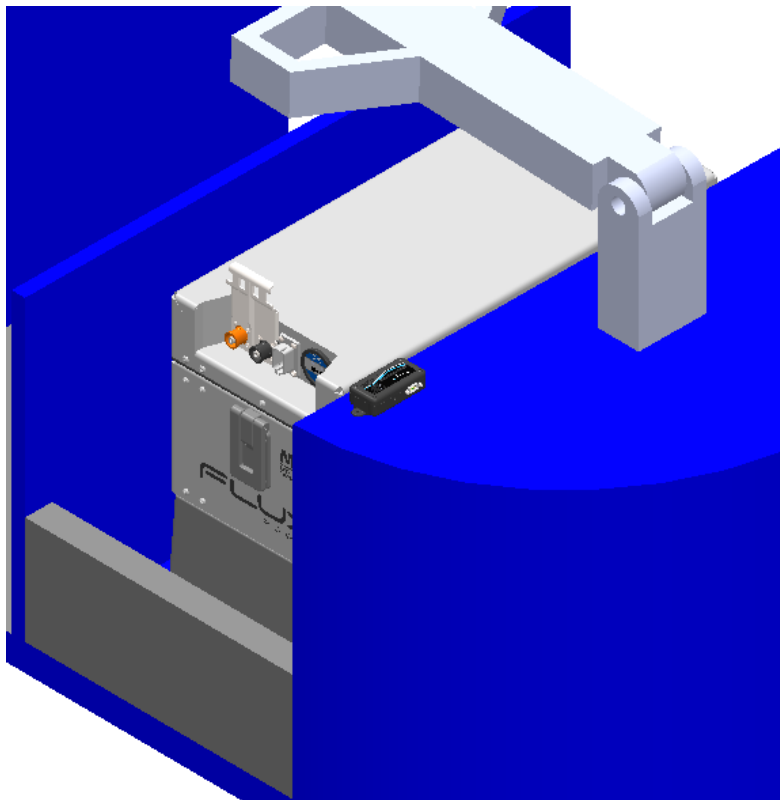
3.1.1 Mounting Points

The external SOC gauge has two mounting points to mount onto the truck frame. These two mounting points can be mounted onto the truck with self-tap screws or zip ties.



3.1.2 Mounting Location

Mount the external SOC gauge so that the Flux Power logo and the LEDs face the operator.



Installation

3.2 Telematics

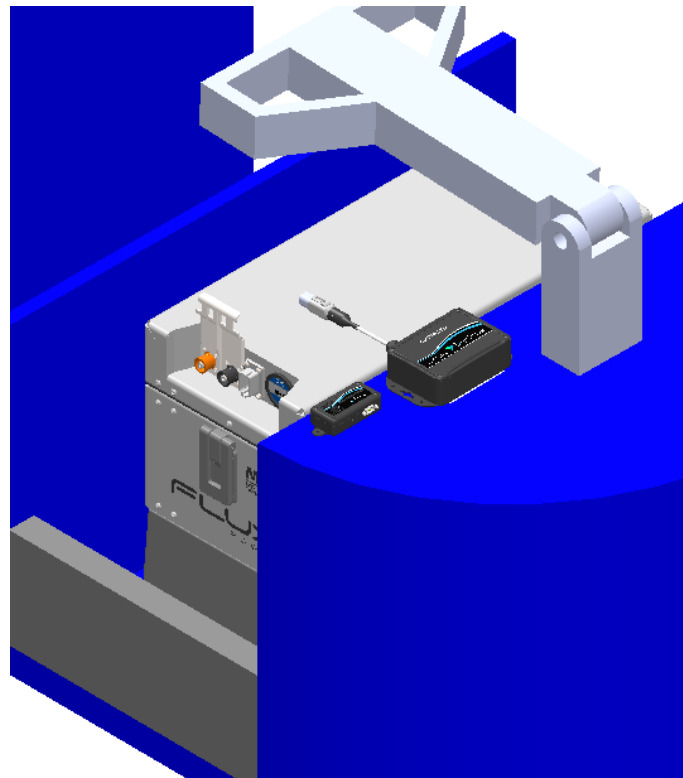
3.2.1 Mounting Points

Use the four holes on the side to mount the telematics box onto the truck by tapping into the truck frame or use the two slots on the side to zip-tie the telematics box onto the truck frame.



3.2.2 Mounting Location

Mount the telematics box on a secured spot where collisions with other objects cannot damage it.



3.3 External Harness

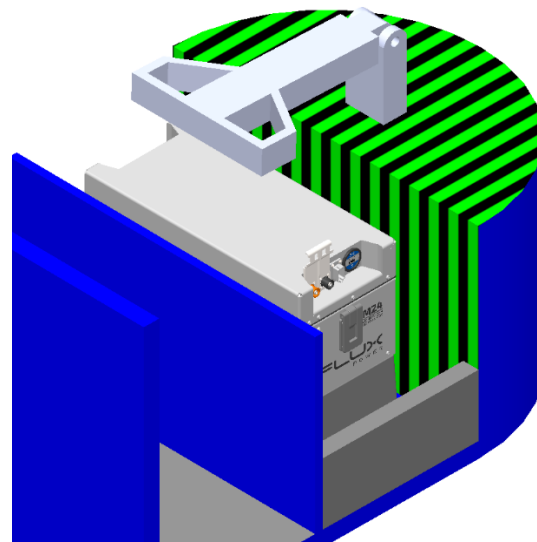
3.3.1 Mounting Points

Use zip ties to mount the external harness's body along the truck frame. Different external harnesses have different connectors depending on the truck and the customer's order. The external harness should not be zip-tied to the power cables.

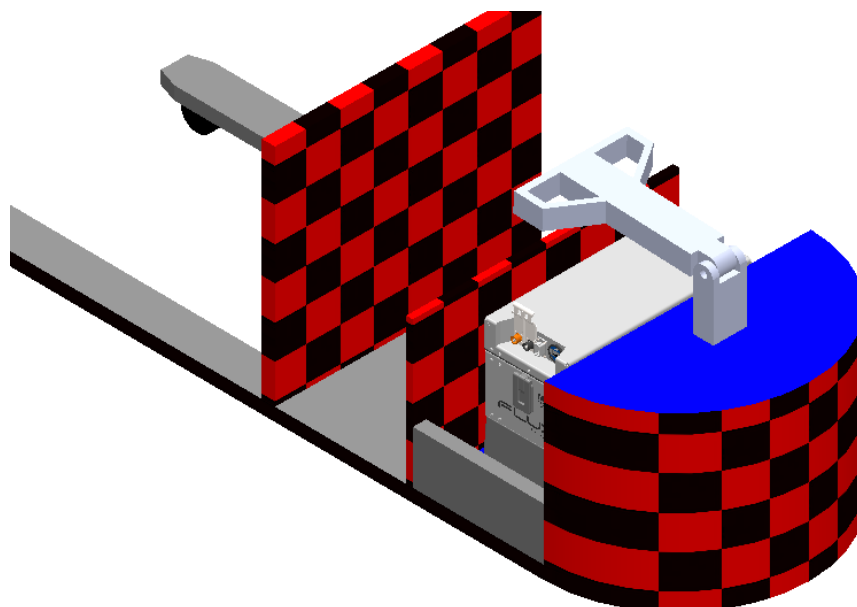
3.3.2 Mounting Location

Wrap the external harness inside the truck frame to limit damage to the harness from the truck's surroundings. Recommended locations are highlighted in striped green. Areas to avoid are highlighted in checkered red.

Recommended locations in striped green:



Avoid mounting the harness in areas where it can be pinched or scraped. Areas to avoid in checkered red:

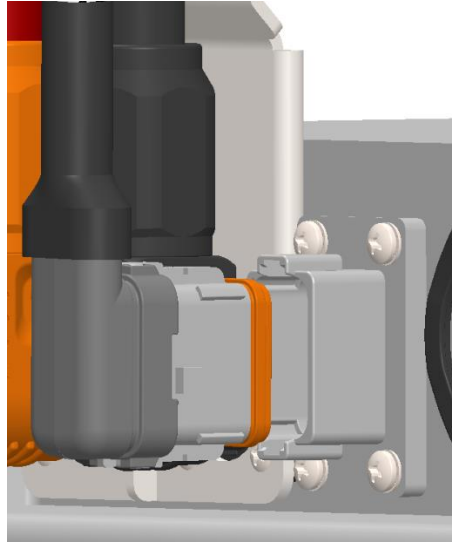


4 Operation

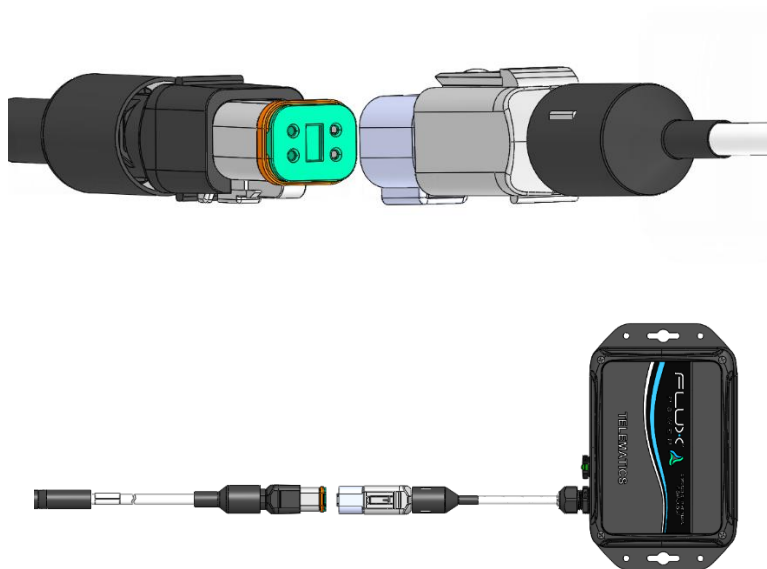
4.1 Discharging the Battery

The battery must have an external harness and all connectors adequately connected to any external accessories present to discharge. External harness connections will vary between different harnesses and truck configurations. An external harness will connect to the battery's 12-pin communications port. The battery's power cables will have a complimentary connector to the truck.

An external harness connection to the 12-pin communications port's connection:

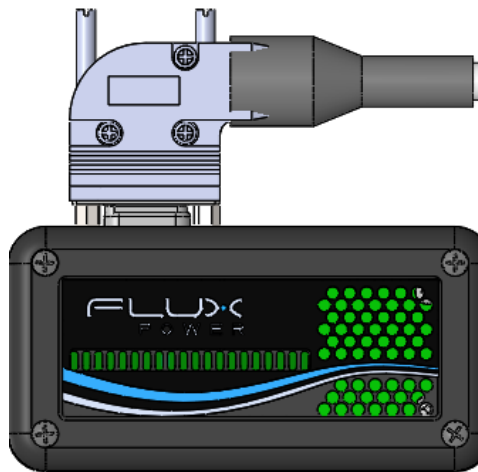
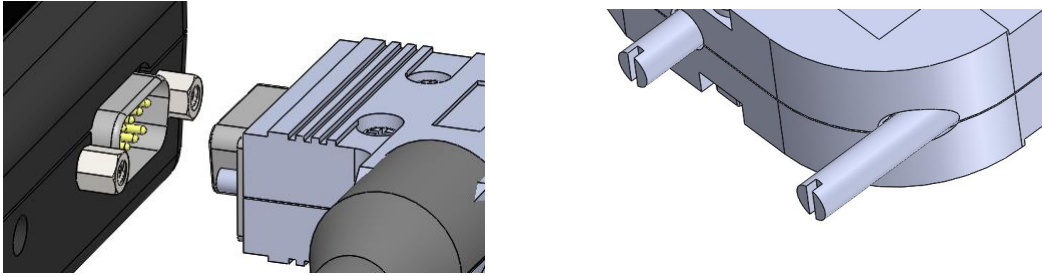


Telematics harness connection is a 4-pin connection:

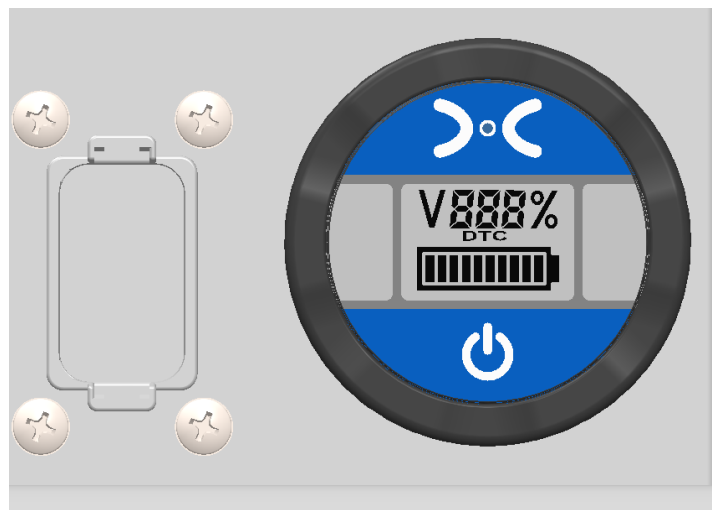


Installation

The external SOC gauge connection is a 9-pin connection. Turn the set screws on the connector to properly secure this connection:



This battery is equipped with an internal BDI. When the external harness is connected correctly, the battery is turned ON by pressing and holding the power button symbol on the BDI for at least 3 seconds. The battery is turned OFF by pressing and holding the power button symbol for at least 3 seconds.



Installation

4.2 Charging the Battery

4.2.1 External Charger

The battery is charged through the same power cables that it uses to discharge through the truck. The connector on the power cables is complimentary to the connector on the truck and the charger. Disconnect the battery's power cables from the truck and connect them to the charger to charge the battery.



4.2.2 On-board Charger

A battery with an on-board charger will have a black A.C. inlet receptacle located on the back of the top face. Connect an A.C. extension cord to the inlet to charge the battery.



5 Flux Power Contact Details

Flux Power Inc.

Address: 2685 South Melrose Drive,
Vista, CA 92081

Tel: 877-505-3589

Fax: 760-741-3535

Email: Support@fluxpower.com

Web: www.fluxpower.com

WARNING – Risk of Fire – No User Serviceable Parts

Copyright © 2018 Flux Power, Inc. All rights reserved. Flux Power, the Flux Power Logo and Flux Power LiFT Pack are registered trademarks or trademarks of Flux Power, Inc. All other brands and product names are trademarks or registered trademarks of their respective owners. This information is intended for the use of Flux Power customers only. Any other use without the express written consent of Flux Power, Inc. is strictly prohibited