

# G2-Series: C48

## 48V ADVANCED LITHIUM-ION BATTERY PACK

SWITCH TO A HIGHER-PERFORMING AND  
LONGER-LASTING LITHIUM-ION BATTERY PACK

**Dramatically** Lowers Your Costs

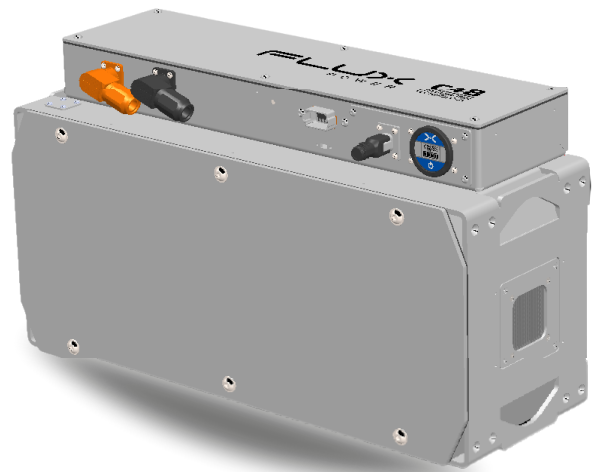
**Safer** Technology

**Improved** Productivity

### ADVANCED LITHIUM-ION TECHNOLOGY

- Higher sustained power, minimal voltage drop-off
- Fast charge in as little as two hours
- Safe - UL Listed BMS, fusing, and BMS controlled contactor
- 3,500 cycles at 80% depth of discharge
- No maintenance required
- Energy efficient with >95% charge efficiency
- Industrial grade constructions and components

SOLUTIONS FOR  
**AGVs/AMRs, Floor Cleaning  
& Stationary Energy Storage**



**FLUX** POWER

[fluxpower.com](http://fluxpower.com)

# SPECIFICATIONS G2-Series: C48

CALL 877-505-3589

LENGTH	28.35 in (72.01 cm)
WIDTH	10.01 in (25.43 cm)
HEIGHT	16.15 in (41.02 cm)
AVAILABLE CAPACITIES	210 Ah / 10.8 kWh
SYSTEM / NOMINAL VOLTAGE	48 V / 51.2 V
MAX CHARGE CURRENT (EXTERNAL)	125 A
MAX DISCHARGE CURRENT	100 A
CHARGE TEMPERATURE RANGE	32 °F to 113 °F (0 °C to 45 °C)
DISCHARGE TEMPERATURE RANGE	-4 °F to 131 °F (-20 °C to 55 °C)
STANDARD CABLE LENGTH	-
WEIGHT	261 lb (118.39 kg)

## HOW FLUX POWER TECHNOLOGY MAKES THE DIFFERENCE

### BATTERY MANAGEMENT SYSTEM (BMS)

The integrated Battery Management System (BMS) is designed and developed by Flux Power in Southern California. Flux Power's BMS is UL approved and fully optimized to provide peak battery performance (even at low charge levels) while keeping the cells safe and healthy. Safety features include protection from extreme temperature environments, overcharge/discharge, high current, and drive-away protection. All Flux Power batteries come standard with this BMS built in and meet UL standards.

### LITHIUM-ION CELLS

Flux Power has optimized the safety and performance of lithium-ion for material handling equipment and other industrial applications. Our cells are UL tested and use one of the safest and most stable lithium chemistry available.

### STANDARD FEATURES

- Early warning for safe shutdown
- Device trouble code (DTC) reporting
- Accurate battery discharge indicator
- CAN enabled
- Integrated heaters for cold temperature applications



[fluxpower.com](https://fluxpower.com)